

[2019-75]

 <b>한국문화원</b> Korean Cultural Center Los Angeles		<b>Press Release</b>		
Request	For Immediate Release		Pages : 5	
Date of Release	12.31.2019 (Tuesday)	Contact	Tammy Cho 323-936-3014	

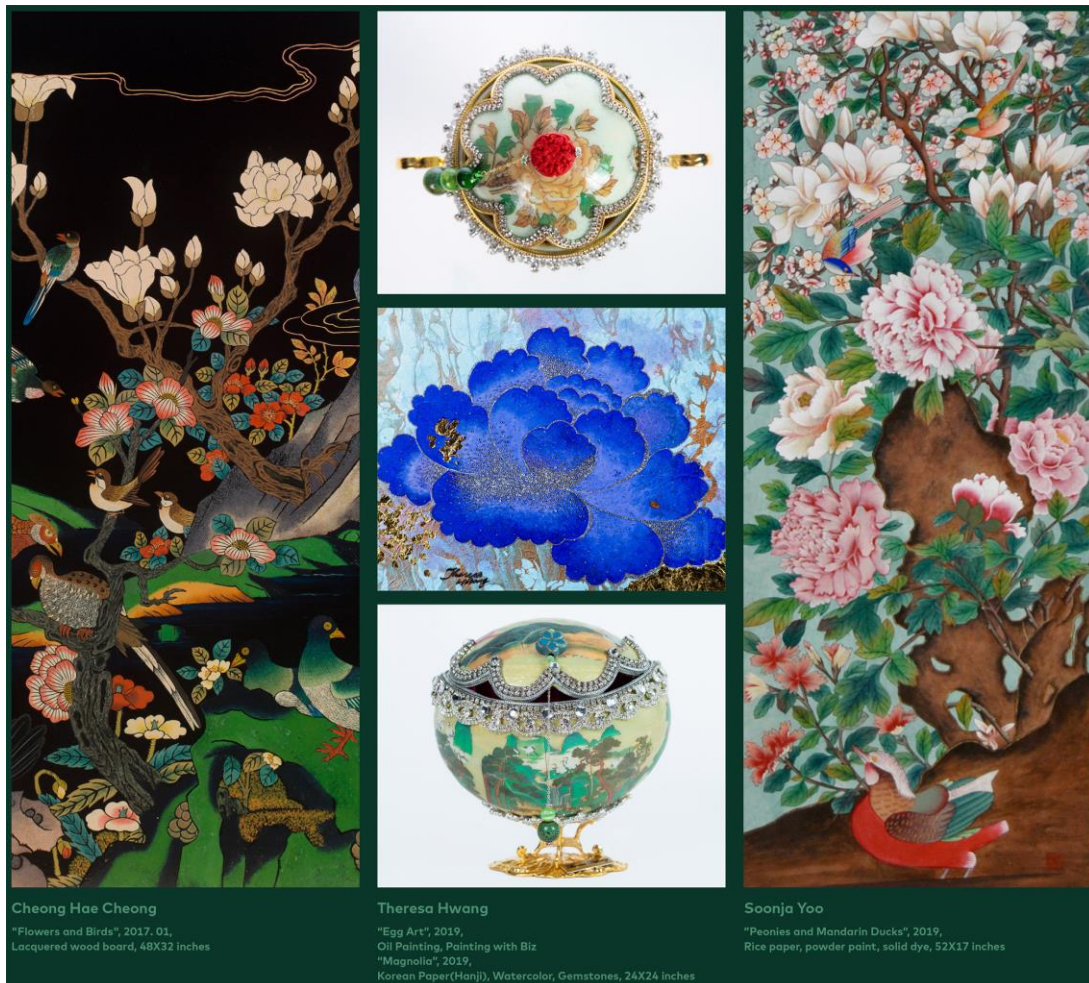
## 2020 LA Art Project 1

# Minhwa: Encounter of Three Artists



- ▶ Title: Minhwa: Encounter of Three Artists
  - ▶ Date: January 10th(Fri) – January 24th(Fri), 2020
  - ▶ Opening Reception: Friday, January 10, 2020 at 7:00pm–9:00pm
  - ▶ Location: Korean Cultural Center Los Angeles Art Gallery (2nd Floor)  
5505 Wilshire Blvd. Los Angeles, CA 90036
  - ▶ Presenter: Korean Cultural Center, Los Angeles
  - ▶ More information: Tammy Cho, at 323-936-3014 or [exhibition@kccla.org](mailto:exhibition@kccla.org)
- \* Gallery Open Hours: Mon-Fri 10am-5pm / Sat 10am-1pm  
(The gallery will be closed Saturday Jan.18 & Monday Jan.20, 2020 for Martin Luther King Jr. Day.)

*“The shift in history of modern Minhwa showcased in Los Angeles”*



The Korean Cultural Center Los Angeles (KCCLA/Director Wijin Park) proudly present the first exhibition of the 2020 LA Art Project, ***Minhwa, Encounter of Three Artists***, which will take place from January 10<sup>th</sup> to January 24<sup>th</sup>, 2020 at the Korean Cultural Center Art Gallery, located at 5505 Wilshire Blvd. Los Angeles, CA 90036.

At this exhibition, three female artists, Cheong Hae Cheong (Seoul, Korea), Theresa W. Hwang (Los Angeles), and Soonja Yoo (Los Angeles) from southern California and South Korea will tell their stories through thirty traditional and modern art pieces.

*Minhwa* is a traditional type of art that was popular in the 18th century to the beginning of 20th century in Joseon. Until now, Minhwa was known to merely mimic the styles of the past, without reflections of the artist's originality. Nowadays, modern Minhwa art embraces the artists' own colors and contemporary trends while maintaining the traditional ways.

This exhibition will showcase the shift in Minhwa through artworks of artists who are leading the new trend of Minhwa.

► **Soonja Yoo**

Born and raised in Korea, she moved to the United States twenty-two years ago. After moving to the United States, she found a job painting abstract drawings on new handbags. Drawn at the fingertips of the artist, the handbags were popular among the Americans. She thought of this job as one she could do when she became older and with this thought, she began to study Korean folk art (Minhwa) and began to draw Minhwa on handbags. What began as a mere idea ten years ago has now become life in the making.



*Flight of the White Cranes, 2019, 53.5x26 inches*

A noteworthy feature of Minhwa, some believe, is its practicality and it is considered to be more popular than other types of painting methods in Korea. It is easy to learn because its patterns can be easily drawn or traced. In particular, traditional Minhwa is bold with various forms and free compositions. One of Minhwa's many charms is that many paintings contain creative humor and laughter, and they are fun to draw.



*Royal Feast Celebration at Hwaseong Fortress: Lady Hyegyeng's 60th Birthday, 2019, 69x18 inches*

In addition to being able to participate in competitions and being able to win numerous prizes, she is most honored to be able to share and discuss her work with people who share the same passion for Minhwa and continue to establish fun learning spaces.

## ► Cheong Hae Cheong

Artist Cheong Hae Cheong is a renowned artist who has won numerous awards as a Minhwa artist and is currently a member of the Korea Minhwa Association and the director of Gyeongju Minhwa Association.

Lacquer is known to last one thousand years. It has been used in furniture making and other crafts since ancient times but its use in Minhwa paintings is relatively short. She feels that it is her mission to let the world know about the Lacquered Minhwa of Korea. The Lacquered Minhwa is painted on a specially prepared board. Soil mixed with lacquer is coated on fabric covered wooden board. It is polished with a finest sand paper after the board is completely dried. Then and only then, it can be painted on.



*Plum blossom, 2018, 16x24 inches, Lacquered wood board, lacquer added powder colors, mixed*



*Tiger, 2018, 20x20 inches, Lacquered wood board, lacquer added powder colors, mixed media*

## ► Theresa W. Hwang

The artistic mind of Theresa Hwang does not dwell in one fixed place. She has pursued art for over 30 years, and yet she continues to venture out for new ideas in art. She specializes in Minhwa, oil painting, pottery, and egg art. "The Feast of Flowers" lays its basis on Minhwa but also implements egg art to show a contemporary form of art.

The rough sketch was done freely, and the coloring was done with acrylic paint, oil paint, and decorated with jewels used for egg art. Through the uses of various materials, Artist Theresa Hwang attempts to show her own style of Minhwa without being confined by existing forms of art genres.



*Eoseongseong Dragon, 30x30 inches, Oil on Canvas*



*Egg Art "The Feast of Flowers", 2019, Oil Painting, Painting with Biz*

Director Wijin Park of the Korean Cultural Center, Los Angeles says that, "This exhibition introduces Minhwa, Korea's traditional paintings, each illustrating people's dreams and hopes through unconventional but artistic expressions. This exhibition is the perfect opportunity to witness the historical flow of traditional Joseon Minhwa transforming into contemporary Minhwa through the works of three prestigious artists."

The exhibition is open to the public and the opening reception will be held on Friday, January 10<sup>th</sup>, 2020 at 7:00-9:00p.m. at the KCCLA 2<sup>nd</sup> floor art gallery. The show will run until January 24<sup>th</sup>, 2020. If you are interested in attending the opening ceremony or for more information, please RSVP at [www.kccla.org](http://www.kccla.org) or call 323-936-3014.